



June 2019

MIST NETS

FIELD EQUIPMENT

EOU 2019

## Table of Contents

Mist nets .....	3
Series m; nylon .....	4
Series h; nylon .....	4
Series 700p (75d/2-ply polyester) .....	5
Series 700 (70d/2-ply nylon) .....	5
Series 1000 (110d/2-ply nylon) .....	6
Series 2000 (210d/2-ply nylon) .....	7
Mist nets accessories .....	8
Pesola spring balances .....	9
Electronic balances .....	9
Wing rulers, wing & tail ruler .....	9
Temperature & humidity loggers .....	10
Callipers .....	10
Digital trail camera .....	10
Colour plastic rings .....	11
Engraved plastic rings .....	11
Metal bird rings .....	11
Banding pliers .....	11
Pliers for plastic rings application .....	11
Cotton bird holding bags .....	12
Sherman traps .....	12
Clap-net trap .....	12
Ecotone binoculars & field scopes .....	13
	14
Ecotone GPS Telemetry	
- news .....	15
- the graphs Activity report .....	16
- GPS-UHF trackers LRD (long range download) .....	17
- necklaces, leg bands & wing tags .....	18
- base stations & accessories .....	18
- GPS-UHF trackers SRD (short range download) .....	19
- GPS-GSM trackers with fixed factory settings .....	20
- shopping possibility information .....	21

**ADVANTAGES:**

- The quality and efficiency of our nets are result from more than 30 years of experience.
- All our nets are made from the highest quality nylon and polyester netting.
- Most are made of Japanese netting, except for a few specialised models, such as the strongest series 2000.
- All our nets are black, UV protected; the material and colours are durable and longlasting.
- The special knots used in our nets help to prevent the loops and shelf strings from moving.
- The construction with positioning strings prevent wind shift of the netting.
- Each net come with Ecotone cotton made bag.

**LOOPS:**

- From 2009 our net's loops are marked with an indelible serial number and the company's name to help control quality and to track nets used illegally.
- The serial number is placed on one of the colour loops and on the product label.
- Our new mist nets loops are longer and stronger than previously used.
- Top loops are colour-coded and equipped with stoppers to make fast setting easier.
- New loops are designed to be used especially with our Mist Net Poles.

**MAIN FEATURES:**

- Net dimensions: length without loops and stretched to a standard tension, height and number of shelves are shown in the table.
- The thickness, visibility and strength of the nets is indicated by the denier (a unit of weight for fibres) and the number of fibres used in the netting. So 70denier/2-ply netting is lighter and thinner than 110d/2-ply netting, and 210d/2-ply is thinner than 210d/3-ply netting.
- Mesh size is measured by one side of the squared mesh - „16 mm” refers to a 6x16 mm mesh.
- Nets of up to three shelves are tethered on a single shelf strand to prevent wind bunching the netting. Nets with four or five shelves feature two tethered strands.

**TO PREVENT ILLEGAL HUNTING** with Ecotone mist nets, we require our customers to send a copy of their ringing licence or a recommendation from a scientific institution before we can process orders.

**HOW TO CHOOSE MIST NETS:** First consider: what animals you intend to catch; bats or birds:

Sample groups used in the tables: A - small passerines; B - medium passerines; C - waders, small ducks, small & medium terns; D - small owls & raptors, medium & big waders; E - owls, medium raptors, medium & big ducks; F - big raptors, geese, cormorants.

Size, strength and behaviour of the animals you are targeting, features of the habitat where you plan to use the nets: open or dense vegetation, height of vegetation, light conditions. Then select the features of the net: most effective type of material and the thickness of the yarn, size of the mesh, number of shelves and height of the net; length of the net.

All prices in catalogue excluded VAT.

**Series M; nylon.** Nearly invisible, ultra-thin (0.08 mm) monofilament netting. Nets with 14 mm x14 mm mesh are perfect for catching the smallest birds, such as hummingbirds and small bats such as Pipistrellus sp. Nets with 20 mm x 20 mm mesh are designed to catch medium-sized bats.

Code	Mesh (mm)	Height (m)	Length (m)	Shelves	Use for:
M-14/2	14x14	2,4	2	4	A, Bats
M-14/3			3		
M-14/6			6		
M-14/9			9		
M-14/12			12		
M-14/15			15		
M-14/18			18		
M-14/21			21		
M-20/3	20x20	2,4	3	4	Bats
M-20/6			6		
M-20/9			9		
M-20/12			12		
M-20/15			15		
M-20/18			18		
M-20/21			21		

**Warning:** Nets M-20 are recommended only for advanced users and in places with a low concentration of bats. They are so effective that it is difficult to remove large catches quickly.

**Series H; nylon.** Netting called 'Hair' or 'Puppy Net' is made from special chain-like thread which makes it soft and elastic. Thanks to this features shelves are not loose and less visible in habitat, the bat or bird tangle easy and can't run away from the net. Netting doesn't soak with water, white netting on request.

Code	Mesh (mm)	Height (m)	Length (m)	Shelves	Use for:
H-3	14x14	4	3	4	A, Bats
H-6			6		
H-9			9		
H-12			12		
H-15			15		
H-18			18		
H-21			21		

**Series 700P (75d/2-ply polyester).** These nets are recommended for catching small birds and bats. They are barely visible and can be used in any habitat, including open areas. The polyester fibre is UV resistant and does not absorb moisture. In the morning or after rain just shake the net to remove droplets. A well - stretched net has only one layer (no pockets) and bats are less likely to echolocate it than a classic net.

Code	Mesh (mm)	Height (m)	Length (m)	Shelves	Use for:
716/3 P	16x16	2,5	3	5	A, Bats
716/6 P			6		
716/7 P			7		
716/9 P			9		
716/10 P			10		
716/12 P			12		
716/15 P	16x16	2,5	15	5	A, Bats
716/18 P			18		

**Series 700 (70d/2-ply nylon).** The most popular line with our customers. The high-quality nylon netting is deep black, UV stable and strong. The nets are barely visible, softer than polyester and are very effective. Used for catching birds in all kinds of habitats, including open areas. Nets with 30 mm x 30 mm mesh are designed to catch medium-sized bats.

Code	Mesh (mm)	Height (m)	Length (m)	Shelves	Use for:
716/3	16x16	2,5	3	5	A
716/6			6		
716/7			7		
716/9			9		
716/10			10		
716/12			12		
716/15	16x16	2,5	15	5	A
716/18			18		
716/12L		1	12	2	



Code	Mesh (mm)	Height (m)	Length (m)	Shelves	Use for:
719/3	19x19	3	3	5	B
719/6			6		
719/7			7		
719/9			9		
719/10			10		
719/12			12		
719/15	19x19	3	15	5	B
719/18			18		
719/12L		1,2	12	2	

Code	Mesh (mm)	Height (m)	Length (m)	Shelves	Use for:
730/9	30x30	3,2	9	4	Bats, B, C
730/10			10		
730/12			12		
730/15			15		
730/18			18		

**Series 1000 (110d/2-ply nylon).** These nets are strong and durable, but still thin and very effective. They remain as strong and as black as new after 500 days of continuous exposure in the field. These nets are ideal for long-term work, are very safe for birds and are easy to use. They are suitable for catching small and medium-sized birds. This series can be used in any habitat, but we recommend that they be set in front of trees or bushes to decrease visibility and to increase their effectiveness.

Code	Mesh (mm)	Height (m)	Length (m)	Shelves	Use for:
1016/3	16x16	2,5	3	5	A
1016/6			6		
1016/7			7		
1016/9			9		
1016/10			10		
1016/12			12		
1016/15	16x16	2,5	15	5	A
1016/18			18		
1019/6	19x19	3	6	5	B
1019/7			7		
1019/9			9		
1019/10			10		
1019/12			12		
1019/15	19x19	3	15	5	B
1019/18			18		

Code	Mesh (mm)	Height (m)	Length (m)	Shelves	Use for:
1022/12	22x22	3,2	12	4	B, C
1022/18			18		
1022/12L		1,6	12	2	
1022/18L			18		
1030/12	30x30	3,2	12	4	D
1030/15			15		
1030/18			18		
1030/12L		1,6	12	2	
1030/18L			18		
1045/12	45x45	3,2	12	4	D, E
1045/18			18		

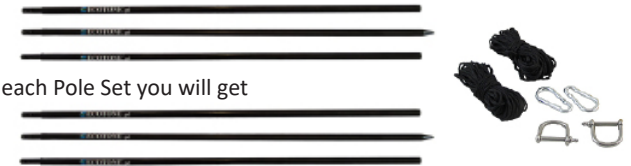
**Series 2000 (210d/2-ply nylon and \*210d/3-ply nylon).** Very strong and durable nets for catching relatively big birds. Recommended for use in shadow where the nets are less visible. Nets 2019 are designed for catching birds at night, such as when using recorded calls.

Code	Mesh (mm)	Height (m)	Length (m)	Shelves	Use for:
2019/12*	19x19	2,1	12	3	C
2019/18*			18		
2030/12	30x30	3,2	12	4	D
2030/18			18		
2030/12L		1,6	12	2	
2045/12	45x45	3,2	12	4	D, E
2045/18			18		
2060/12	60x60	3,2	12	4	F
2060/18			18		
2060/21			21		
2070/21*	70x70	3,2	21	4	F



**ALUMINIUM MIST-NET POLES** - Ecotone aluminium mist nets poles are designed for ornithological and bat mist nets. Thanks to segmental construction it's very easy to adjust height of the pole to your own needs, especially to use with high nets: 4m, 5m and more. Our net poles are fully made from high quality aluminium which makes them lightweight, very durable and non-rust. Seamless connections to make nets slide without any obstruction. Each section ends with pivot. The pivot has two holes: one to mount guy ropes and the other for extra string to easily pull mist net to the top of the pole.

**PROMOTION:** Now with each Pole Set you will get a mounting set GRATIS!



**TELESCOPING MIST-NET POLES** - designed and produced by ECOTONE.

Lightweight telescoping construction make these poles easy to transport and operate. Strong enough to support 20 m-plus nets and the weight of heavy birds. All surfaces finished in mat black – poles do not scare birds. Top of each section reinforced with a metal ring. Reduced flexibility - tube walls are more than twice as thick as those used for fishing rods. Bottom section fitted with strong spike to anchor pole in the ground. Can be easily folded when removing birds or bats from higher parts of the net. Secure section's joints - poles do not collapse occasionally when operating.

**BAG for mist nets poles:** - designed for Ecotone's mist net poles. Ideal to transport and protect poles.



**MOUNTING SETS for mist nets poles:**

- for aluminium mist-net poles
- for telescoping mist-net poles



## PESOLA SPRING BALANCES

Model	Capacity/division
Light Line	
10010	10g/0.1g
10020	20g/0.2g
10050	50g/0.5g
10100	100g/1g
10500	500g/5g
11000	1000g/10g
Micro Line	
20010	10g/0.1g
20030	30g/0.25g
20060	60g/0.5g
20100	100g/1g
Medio Line	
40300	300g/2g
40600	600g/5g
41000	1000g/10g
42500	2500g/20g
43000	3000g/20g
Macro Line	
80005	5kg/50g
80010	10kg/100g
80020	20kg/200g
80035	35kg/500g
80050	50kg/500g



## ELECTRONIC BALANCES

Code	Capacity/division
PPS200	200g/0.01g
CL-201	200g/0.1g
CL-2000	2000g/1g
CL-5000	5000g/2g
MS-1000	1000g/0.2g
PTS-3000	3000g/0.1g



## WING RULERS

Code	Division
Ruler 15	15 cm
Ruler 30	30 cm
Ruler 50	50 cm
Ruler 100	100 cm



## WING &amp; TAIL RULER



## TEMPERATURE &amp; HUMIDITY LOGGERS

„iButton“ miniature loggers for long-term ambient conditions monitoring, e.g. in bat colonies, nest boxes.

Model	Temperature range
DS1921G	-40°C to +80°C
DS1921H	+15°C to +46°C
DS1921Z	-5°C to +26°C
DS1922L	-40°C to +85°C
DS 1922E New	+15°C to +140°C
DS1922T	0°C to +125°C
DS1923 (Hygrochron)	-20°C to +85°C Includes 0 to 100% Humidity Logger
Accessories:	USB readers, holders, markers, ect.



## CALLIPERS

Code	Range/accuracy
MEASY dial	150mm/6", 0,1 mm/0,001"
MEASY DG digital	150mm/6", 0,1 mm/0,001"

## DIGITAL TRAIL CAMERA SGN 6210M-HD

Programmable 2/5/12-Megapixel high-quality resolution. HD video with sound:H.264/AVC format 1080 and 720P. Infrared Non-glow night vision LEDs flash range: 940nm—30 ft (~10m). In "Cam + Video" mode, camera takes both pictures and video at every trigger event. Continuous shooting interval time about 0.5 seconds (stamp off). Ultra low standby power consumption. Extremely long in-field life (in standby mode, up to 6 months with 12 x AA batteries). Unique side Prep Sensor design provides wider sensing angle and enhances camera's response speed.

## Exemplary applications:

- registration of birds and mammals by feeders, pastures, nests, burrows;
- monitoring passages for animals under roads and oversight of protected objects;
- population size evaluation of medium and big mammals.



## COLOUR PLASTIC RINGS

Code	Diameters (mm)
401/5	2.3, 2.8, 3.1, 4.0, 4.5
401/11	5.5, 6.4, 8.0, 9.5
401/18	11.0, 14.5, 15.5, 17.5, 19.0
401/20	20.6, 25.4, 31.75



## ENGRAVED PLASTIC RINGS

Code	Size (inside diameter/width)
403/10	10/30 mm
403/14	14/30 mm
403/18	18/30 mm
403/*	*/40 mm

\* regardless diameter but width (high) of 40mm



## METAL BIRD RINGS

Stainless steel & aluminium	Aluminium	Stainless steel
Round split rings	1,8-18 mm	2,8-19 mm
Round rings with lock	7-26 mm	9-30 mm
Rivet rings	18-26 mm	-
Oval rings with lock	-	9-22 mm



## BANDING PLIERS

Code	designed to close rings
Pliers-5	from 2mm - 7 mm in diameter.
Pliers-2	greater than 8 mm in diameter.



## PLIERS for plastic rings application

Code	designed for plastic rings application
PLIERS-S	size from 2.5 to 7 mm
PLIERS-M	size from 8 to 14 mm
PLIERS-L	size bigger than 14 mm



## COTTON BIRD HOLDING BAGS

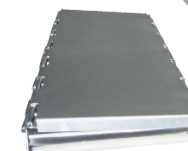
Code	Size
W 15	small (15x20) cm
W 20	medium (20x25) cm
W 25	large (25x30) cm



## SHERMAN TRAPS

They are used to catch a wide variety of small mammals including shrews, voles, mice, rats, chipmunks, flying squirrels and ground squirrels. The most common reported uses are population studies, collection, teaching and ecological or environmental impact studies.

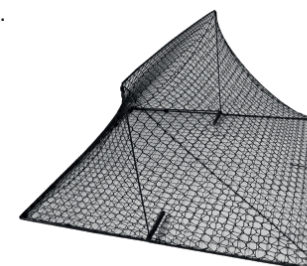
- safe and effective
- sized for every need
- durable and easy to transport



## CLAP-NET TRAP

Metal frame construction, net stretched on the bottom and cotton fabric on the top.

- Ecotone Clap-Net Trap 30x30 cm dimensions: 30x30x15cm, weight 180g (for birds not bigger than jay)
- Ecotone Clap Net 40x40 cm dimensions: 40x40x20cm, weight 380g (for birds not bigger than lapwing)
- Big Clap-Net Trap for raptors dimensions: 82x92x47 cm, weight 1650g. Easy to transport, light, clap-net trap for raptors and other big birds.



### Ecotone binoculars & field scopes. Kamakura Japan - for Ecotone.

High resolution and perfect color fidelity in a wide range of light conditions. All models offer high standards of performance, design and quality.

- Aspheric, Long Eye Relief (LER) eyepiece lens design ensures eye relief with or without glasses and provides full field of view;
- Super High Reflection (SHR), Phase Corrected (PC) and multicoated BAK-4 prisms optimize image definition;
- Newly designed Fully Flat Multilayer Coating (FFMC) on all air-glass surfaces improves light transmission to more than 99%;
- The lightweight and durable magnesium or aluminum, nitrogen-filled, waterproof body is covered with natural rubber, which provides maximum protection and comfortable handling in all weather;
- All ECOTONE binoculars have full internal focusing. 2- or 3-stage locking twist-up eye cups are metal-reinforced and rubber finished.

### Ecotone binoculars MR-3 series

#### MR-3 8x42 & MR-3 10x42

New-generation binoculars, perfect brightness, high image resolution and edge-to-edge sharpness. Recommended for experienced ornithologists.

- Ultra-low-dispersion ED lenses
- Plasma coating on the outside surface of the eyepiece and objective lenses
- Phase-correction coating on prisms enhances resolution and contrast
- Newly designed coatings: SHR on prisms and FFMC on all air-glass surfaces
- Nitrogen filled, completely waterproof magnesium body with O-ring seals
- Metal-reinforced, twist-up eye cups finished with rubber
- Neoprene neck strap and soft case included
- 5-year warranty



Kamakura Japan  
for Ecotone

### Ecotone binoculars AD-7 series

#### AD-7 10x42 & AD-7 10x50

The most popular binocular in our offer. Perfect for wildlife observations - recommended for birdwatching. Outstanding optical performance.

- Bright with excellent image resolution
- High-reflection coating on prisms
- Phase-correction coating on prisms
- Fully multicoated on all air-glass surfaces
- Rubberized, lightweight, waterproof, nitrogen-filled body
- Metal-reinforced twist-up eye cups finished with rubber
- Neoprene neck strap and soft case included
- 5-year warranty



### Ecotone binoculars QD-7 series

#### QD-7 8x28 & QD-7 10x28

Fantastic choice for „all-around“ viewing of birds and other wildlife. Bright & perfect image resolution and edge to edge sharpness.

- Small and compact, rubber armored body
- Complete waterproof with tight O-ring sealing
- Fog proof with dry nitrogen filled body
- Complete waterproof chassis
- Phase correction enhances resolution and contrast
- Metal-reinforced, finished with a rubber pop-up eye cups
- Neoprene neck strap and soft case included
- 5-year warranty



Kamakura Japan  
for Ecotone



### Ecotone SP-80 field scope

Designed to deliver outstanding optical quality and reliability. Manufactured to withstand severe conditions and to operate anywhere. Tested thoroughly in long-term Arctic and African research expeditions.

- Ultra-low-dispersion and high-resolution ED lenses
- Plasma coating on the outside surface of the eyepiece and objective lenses
- Newly designed coatings used: SHR on prisms and FFMC on all air-glass surfaces
- Bayonet-mounted eyepieces and photo adapters available
- Metal-reinforced and finished with rubber twist-up eye cup on zoom eyepiece
- Nitrogen-filled, completely water proof, covered with natural rubber, durable body
- Slide-on hood, aiming line and rotating tripod mount
- 5-year warranty



Kamakura Japan  
for Ecotone



## News

## Milestones:

- almost unlimited & low cost data transfer via GPRS/3G;
- over-the-air (OTA) automatic firmware upgrade via 3G link;
- detailed daily activity reports based on acceleration sensor.

## New models available:

- TRINGA GPS-GSM ~9 g miniature bird tracker;
- CREX GPS-GSM-UHF/GPRS, small and lightweight 14 g;
- CREX-XS GPS-GSM-UHF/GPRS, miniature 11 g version;
- URIA GPS-UHF and CREX loggers with a TDR and improved diving duration recorder;
- bird leg rings, GPS-GSM or GPS-GSM-UHF/GPRS, from 15g;
- ultra-long range base station P6 with ~70% longer downloading ranges;
- miniature XS-UR base station for the drone application;
- miniature XS-NS, short range base station for data download in a single nests o roosts;
- miniature ~from 3 g TDR & diving duration loggers with a remote data download.

## New features and changes:

All the GPS-GSM, GPS-UHF-GSM and long range GPS-UHF bird trackers and mammal collars have got new hardware and the firmware:

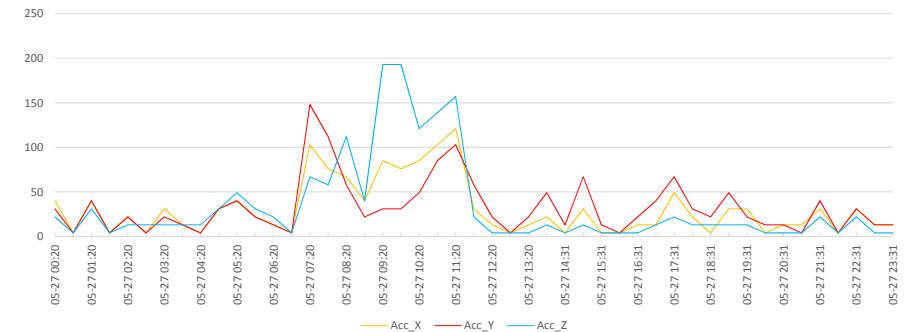
- better power management and lower power consumption;
- barometric sensor or temperature and depth recorder (TDR) available for all models;
- all loggers use 2G/3G quad band HSPA/GSM worldwide & US modems;
- data download alternatively via 2G/3G GPRS to FTP server;
- memory increased to 2 GB (no real limits for the recorded data);
- accelerometer and precise temperature sensor have been added to all models;
- optional built-in VHF beacon with an automatic modes enabling mortality detection.

## New functions :

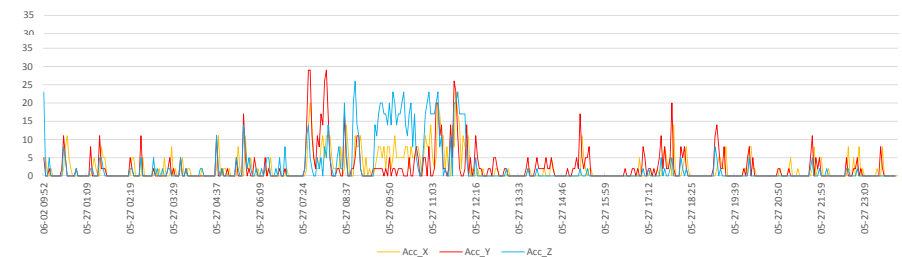
- GPS can be controlled by the acceleration sensor - logger records positions only when animal is moving. This feature allows to track movements with better resolution and save energy when object do not move;
- all loggers are equipped with acceleration sensor and can collect raw acceleration data recorded in programmable (1-30 Hz ) bursts as well record precise daily activity reports;
- the daily "activity report 48" for the GPS-GSM system comes once a day in one SMS. Each record consists of an amount of recorded movements, sampled every 4 seconds and summarised separately for the X, Y, Z axis; It includes 3x48 records collected every 30 minutes.;
- the "activity report 480" for the GPS-UHF-GPRS have much better resolution, records are collected every 3 minutes and consists of an amount of recorded movements, sampled every 4 seconds and summarised separately for the X, Y, Z axis (3x480 records daily).

The graphs below show one day of activity data of the same vulture individual, recorded simultaneously with the use of three different methods.

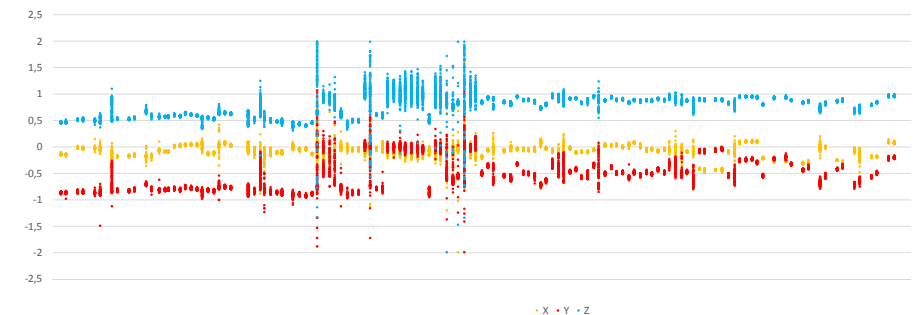
## • Activity report 48 (48 points/day x 3 axis)



## • Activity report 480 (480 points/day x 3 axis)



## • Acceleration raw data recorded in bursts

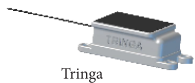
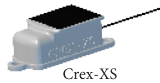
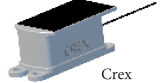
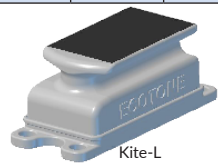
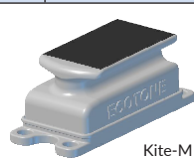
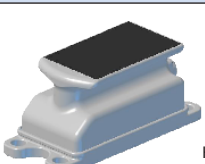


## GPS-UHF trackers LRD (long range download)

The most energy-efficient system enabling mass data collection without any charges for the data transfer. The GPS-UHF part uses less energy and allows to collect many more fixes than with the GSM. During sunny weather, 1-5 minute intervals 24h/day are possible. Dedicated for tracking of breeding or wintering birds which can download data via UHF regularly. As well all-year-round tracking of migrants is possible, but with data download when tagged animals will be again in the UHF range.

**Choice of basic models\* for GPS-GSM, GPS-GSM-UHF/GPRS & GPS-UHF LRD trackers:**

**Backpack series,** attachment usually on a harness.

LOGGER MODEL	Dimensions LxWxH [mm]**	Logger weight *** [g]	For body weight from:	Description	Recommended for:
Backpacks with solar charger.					
TRINGA	27x20x12	9,5	~300g	only external antenna, small solar charger & battery	falcons, waders, gulls
CREX-XS	36x25x19	12	~400g	only external antenna, small solar charger & battery	falcons, waders, gulls
CREX	40x25x19	14	~480g	only external antenna	falcons, big waders, gulls
 Tringa  Crex-XS  Crex					
KITE-L	58x27x18	17	~570g	low profile housing	birds with thin plumage and short feathers which will not cover solar charger on a low profile housing, e.g. falcons, hawks, big waders, gulls, raven
KITE-M*	58x27x24	19	~640g	elevated solar charger	birds with thicker plumage which may cover solar charger on a low profile housing, e.g. buzzards, black grouse, pheasants, not diving small and medium ducks
KITE-H*	58x27x28	20	~680g	elevated solar charger	birds with thick plumage and long feathers, e.g. eagles, non-diving ducks of mallard size, big capercaillie, storks
 Kite-L  Kite-M  Kite-H					
GRIFFON-LF 2xS	58x27x28	~26	~1000g	strong housing with glass-reinforced solar charger	species which can easily damage the tracker's housing, e.g. vultures
GRIFFON*	58x27x28	~24	~1000g	strong housing with glass-reinforced solar charger	species which can easily damage the tracker's housing, e.g. vultures

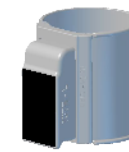
HOME\*Elevated Solar Charger (ESC), housing shape prevents solar charger from shading by the feathers.

## Necklaces, leg bands &amp; wing tags.

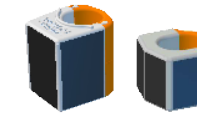
Necklaces are designed for tracking geese, ibises, swans and similar species.

Fast and easy locking system without any screws or tools. Leg bands and wing tags can be used on some, usually big bird species, e.g. eagles, big vultures, cranes.

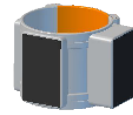
LOGGER MODEL	Dimensions LxWxH [mm]**	Logger weight [g]***	Description	Recommended for:
IBIS	Ø 35-80	30	The height can be fitted to the species/ user requirements	geese, ibises, swans and similar species.
Leg band	Ø >30	25	Designed according to the user specification. We do prepare leg bands with the GPS tracker or trackers ready for mounting on customer's bands	some vulture or eagle species, long leg birds, e.g. cranes, storks, flamingos
Wing tag	n.a.	18	Based on a low profile trackers attached to the customer's wing tag plates or wing tags designed and manufactured in accordance with the user specification	any big bird species, where wing tags can be used
TURTLE	58x27x28	48	Lithium battery for ~1500 GPS-GSM or ~20000 GPS-UHF positions****	for aquatic turtles, including species hibernating over the winter time



Ibis collar



Leg bands



Branta collar

## Base stations &amp; accessories

The base station is necessary to download data from the loggers as well as to change logger's settings. Base station can be hand operated as well as installed in the place which will be visited by the tagged objects., ie.: in the colony, near the water holes or roost. When base station works continuously, loggers will upload collected data each time when appear in the base station range. Presence in the range (in the colony, nest, roost) will be also recorded in a programmable intervals (1 to 5 minutes) in a base station memory. The base station signal can disable GPS data collection when logger is in its range, to save energy.

- enables remote, automatic data download from the loggers and sending new settings to all Ecotone GPS-UHF trackers;
- distance of bidirectional communication varies between 200m to 6 km and depends on the logger's specification, antenna's version and field conditions.
- records data in a 2GB internal memory without connection to the PC; for data safety base station uses double memory banks (one as a backup);
- power supply by the battery grip, any USB charger or dedicated rechargeable power bank which can work with a solar charger.

HOME

## GPS-UHF trackers SRD (short range download)

The smallest and the lightest GPS trackers from our offer. Remote programming and data access via UHF link - no need to recapture animals. Designed for tracking animals (birds, bats, reptiles) during the breeding season that regularly return to their nests, burrows etc. As well all-year-round tracking of migrants is possible, but with data download when tagged animals will be again in the UHF range.

### Choice of basic models \* for GPS-UHF SRD trackers.

#### Backpack & tail mount series.

Attachment on a harness, glued, fixed by the cable ties or Tessa tape to the hackle or tail feathers.

LOGGER MODEL	Dimensions LxWxH [mm]**	Logger weight [g] ***	GPS positions without battery charging****	Description	Recommended for:
Loggers with solar charging					
PICA	36x17x12	5,6	~500 + solar	waterproof up to ~3 m depth	bee-eaters, kestrels, great snipes, terns
STERNA	36x17x13	7,4	~500 + solar	waterproof up to ~3 m depth	small gulls, jackdaws, shearwaters
URIA 300 S	36x23x14	15	~3000 + solar	waterproof >200 m depth	guillemots, boobies
Loggers without solar charging					
ALLE 60	26x16x10	4,5	~500	waterproof up to ~10 m depth	little auks, small owls, bats
ALLE 100	32x16x10	5,9	~1000	waterproof up to ~5 m depth	owls, small falcons, bats
URIA 60	26x16x11	6	~500	waterproof >200 m depth, optionally TDR	any diving birds or reptiles
URIA 100	35x16x11	8,5	~1000	waterproof >200 m depth, optionally TDR	any diving birds or reptiles

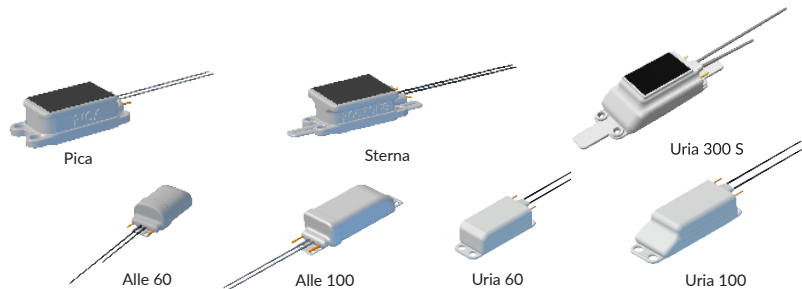
\*For all models, please check the Ecotone GPS Telemetry catalogue.

All housings are waterproof up to ~3 m depth.

\*\*Dimensions without harness loops or external antennas.

\*\*\*The above weights are calculated for the GPS-GSM & GPS-GSM-UHF models, for the GPS-UHF subtract ~4g.

\*\*\*\* Calculated for conditions with good quality of the GSM & GPS signal.



## GPS-GSM trackers with fixed factory settings

Worldwide GSM 2G range, data access from the web profile. Designed for tracking ducks, raptors, storks, cormorants etc., as well as mammals. Often used in the reintroduction projects or when four GPS positions per day are sufficient. Those loggers use factory, usually pre-set to 6 hours GPS interval.

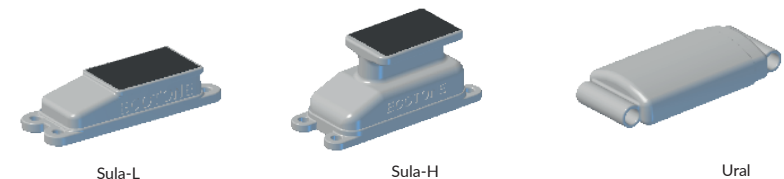
- data upload from memory when GSM network is accessible;
- GPS-GSM data: GPS position, temperature, battery voltage, GSM signal strength, operating parameters;
- long-life rechargeable battery;
- highly efficient solar charger, works as well in a low light conditions;
- data access from the web profile;
- one year of GSM data transfer calculated for 6 h GPS interval included in the price;
- in preparation models with worldwide & USA 2G/3G quad band HSPA/GSM communication range.

LOGGER MODEL	Dimensions LxWxH [mm]**	Logger weight [g] ***	For body weight from:	Description	Recommended for:
SULA-L	59x27x19	28	~1000g	low profile housing , solar charger	birds with thin plumage and short feathers which will not cover solar charger on a low profile housing, e.g. falcons, hawks, gulls, raven
SULA-H	59x27x29	30	~1000g	elevated solar charger	birds with thick plumage and long feathers, e.g. eagles, non-diving ducks of mallard size, big capercaillie, storks
URAL	59x26x18	34	~1200g	no solar charger, battery for ~1000 GPS positions	for tracking birds in a poor light conditions or when feathers can shadow the solar, e.g. eagle owls, ural owls
URAL-1600	55x37x21	50	~1500g	no solar charger, battery for ~2000 GPS positions	for tracking birds in a poor light conditions or when feathers can shadow the solar, e.g. eagle owls, ural owls
SULA COLLAR	Ø 150	200	n.a.	no solar charger, battery for ~12000 GPS positions. Neck diameter from 150 mm	lynx size cats, wolfs, antelopes

All housings are waterproof up to ~3 m depth.

\*\*Dimensions without harness loops or external antennas.

\*\*\*The above weights are calculated for the GPS-GSM & GPS-GSM-UHF models, for the GPS-UHF subtract ~4g.



## **ECOTONE**

is an association of professional ornithologists and ecologists. Since 1993, we produce various kinds of mist nets for catching birds and bats. The quality and efficiency of our nets are the result of more than 30 years experience in field work. All our mist nets have been thoroughly tested by the Ecotone team in conditions as diverse as the snowy Arctic, tropical forests and deserts. They are also continually tested by thousands of customers in countries around the world.

## **WE ARE REPRESENTED IN:**

Brazil, Columbia, Czech Republic, Finland, France, United Kingdom, Germany, Hungary, Iran, Israel, The Netherlands, USA, Portugal, South Africa and Spain.

## **ORDERS:**

- Visit our e-shop at [www.ecotone.com.pl](http://www.ecotone.com.pl) or order by e-mail with the catalogue code and quantities of the items you need.
- Please do not make any prepayment before getting our pro forma invoice.
- Prices do not include VAT or any taxes due in your country.
- We accept payment by credit card or bank transfer.
- We usually send goods abroad by FedEx.

## **SPECIAL ORDERS:**

- We can produce bulk quantities of any nets with length, height, mesh size, number of shelves and kind of netting specified by the customer.
- We also manufacture special-purpose nets such as dho-gaza or canopy nets, on request.
- We can adapt the length up to 24 m and height of nets, as well as the number of shelves to meet particular needs.

projekt okładki: ANNA ILISZKO



To order visit our e-shop:  
**[www.ecotone.com.pl](http://www.ecotone.com.pl)**